

# Easee Charge

Easee Charge maximises the available electrical capacity within the building using dynamic load and phase balancing. The ultimate solution for delivering EV-Charging at scale for workplace, apartment blocks, car parks and fleet.



Why choose Easee Charge?

# Innovative commercial charging



## Benefits

- Fully dynamic charging power 1.4–22 kW (1 and 3 phase charging)
- Reduces capacity requirements by up to 90 %
- Load balancing of up to 101 chargers per fuse
- Automatic queuing system
- The load and phase balancing works offline
- WiFi connectivity
- Integrated eSIM in each box, lifetime free subscription
- Permanent locking of the Type 2 cable
- Integrated earth fault protection (RCD)
- Integrated RFID reader (NFC / ISO 14443 and MIFARE Classic®)
- Supports whitelisting of RFID tags, approved tags are automatically stored locally in each Charging Robot
- Energy measurement (+/- 2 %), for reading charge consumption
- Developed and manufactured in Norway
- The box is 69% smaller than other solutions and weighs only 1.5 kg
- 3 year warranty, from the day the charger is installed
- Universal, fits all types of electric cars & power supplies
- Full control with the Easee app or local Wifi interface
- You choose the colour

Why choose Easee Charge?

# 22<sub>kW</sub>

## Full of power

The charger can charge on both 1 and 3 phase and supports charging up to 22 kW. It has a Type 2 standard charging connector.

# 101<sub>pcs</sub>

## Load balancing

Easee enables load balancing of up to 101 Charging Robots on a single circuit. It can operate both online and offline. Requires WiFi mesh in larger facilities for 100 % operating guarantee.

# 10<sub>x</sub>

## Quick charge

With Easee Charge, you can charge up to 10x\* faster than with a regular outlet.

It charges as quickly as possible with the available capacity and provides you with the highest charging power.

\*10 times faster charge requires a 3-phase installation. With 1 phase you will still get 3 times faster charge.

# eSIM

## Internet access

All our Charging Robots are connected to the internet through mobile network\*. If you buy now you get free mobile internet access throughout the lifetime of the product. That means you don't have to worry about having WiFi coverage in your garage.

\*Assuming cellular coverage is available.

# 69%

## Small

The Charging Robot is 69 % smaller and lighter than other electric chargers, with similar functionality. It weighs only 1.5 kg! This means that we save the environment at least 4 kg of copper and plastic per produced charger.

# 24<sub>/7</sub>

## Always updated

The Charging Robot is updated with new features continuously. This way, you know that you have purchased a safe and future-proof product.

# 5<sub>x</sub>

## A colourful choice

We have covers in five different colours; White, Anthracite, Red, Blue and Black. The choice is yours.

# 3<sub>yr</sub>

## Warranty

We want you as a customer to have confidence that you have bought lasting quality. A product from Easee comes with a 3 year\* warranty.

\*Some countries may have extended warranty.

## Why choose Easee Charge?

---

### Easy to scale

We have made it easy and affordable to invest in modern and forward-looking charging infrastructure. With “Easee Ready” docking station you get a completely EV ready charge point at low cost. By pre-installing the infrastructure within the building, upon demand Easee Charge can subsequently be deployed with our innovative “Plug & Play” technology at no additional installation cost.

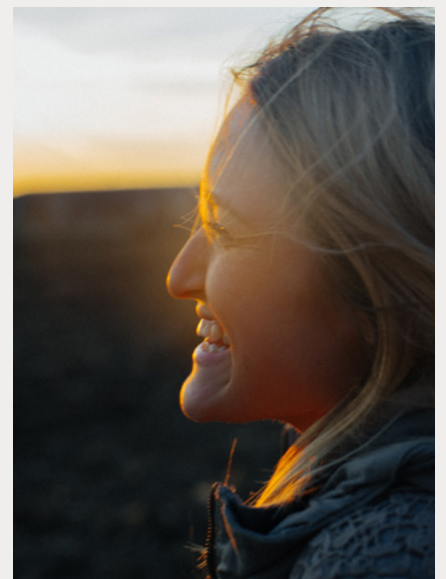
The Charging Robot acts as an intelligent junction box and it supports the expansion of multiple charging stations on the same cable. This allows you to easily scale the system.



### Fair charge and cost distribution

The Easee Charge have a fully autonomous load balancing system built-in ensuring that the power draw is evenly balanced. The intelligent queuing system ensures that all cars are charged without overloading the available power supply.

The Easee Charge measures accurate power consumption through its built-in power meters. When a charging station has multiple owners, you keep track of the power consumption of each one, by registering their charge with a RFID chip or through the app.



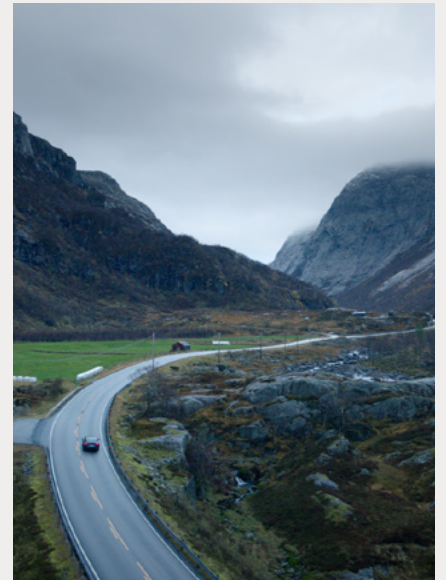
## Why choose Easee Charge?

### Made in Norway - for Norwegian weather conditions

We develop and manufacture our products in Norway. Our products are developed for being able to withstand harsh environments. Not only is it tough it is also small! Our Charging Robot is 69 % smaller than other EV-chargers. It only weights 1.5 kg. We have strived to contribute to a sustainable future and are saving the environment for 4 kg of copper and plastics per produced charger.

The charger thrives just as well on the outside of a house as inside a garage. Its components are of high quality and is composed in a very special way. It is IP54 certified and designed to withstand the Norwegian climate.

We want you as a customer to have confidence that you have bought lasting quality. One product from Easee comes with a 3 year warranty.



### Feel safe

We've added 3 extra levels of security, so that we can sleep well at night, knowing that you can do it too. Safety is an important part of the design.

With an Easee Charging Robot you can be assured that charging is done safely. The Charging Robot is designed to the latest standards. In addition, there is built-in electronic earth fault protection that ensures detection of DC and ground faults.

The Charging Robot is also equipped with temperature sensors and protection to prevent overheating. You also don't have to worry about crooks, the charging cable can be permanently locked in the box via the app or the local WiFi interface.



# Specifications

Measurement  
in mm



## Technical

### General

Dimension (mm): H: 256 x W: 193 x D: 106  
Wall mounting (mm): c/c H: 160 x W: 125  
Operating temperature: -30 °C to +50 °C  
Weight: 1.5 kg

### Charging

Charging power: 1.4-22 kW  
6 A 1 phase - 32 A 3 phase (automatically  
adjusted in relation to available capacity)  
Up to 7.36 kW at 32 A 1 phase  
Up to 22 kW at 32 A 3 phase (TN grid)  
Number of phases: 1 or 3 (fully dynamic)  
Connection point: Type-2 socket (IEC 62196-2)  
Voltage: 3 x 400 V AC/ 230 V AC ( $\pm 10\%$ )  
Mains frequency: 50/60 Hz  
Load balancing of up to 101 Charging Robots  
per circuit  
Load and phase balancing works offline  
Built-in energy meter ( $\pm 2\%$ )

### Connectivity

Built-in eSIM (LTE Cat M1/ 2G /GPRS)  
WiFi 2.4 GHz b/g/n connection  
Easee Link RF™  
Control charging with the Easee app  
RFID/NFC reader  
OCPP 1.6 via our API

### Sensors and indicators

Light strip showing the status of the charger  
Touch button for manual adjustment  
Temperature sensors in all main contacts

## Colours



## Safety

### Protection

Built-in RCD for ground fault protection (30 mA AC/ 6 mA DC)  
RCD is automatically reset by disconnecting the charging cable  
Degree of protection: IP54 (the backplate is IP22 without cover)  
Impact resistance: IK10  
Fire class: UL94  
Insulation class: II  
Over voltage category III

### Complies with the following regulations

2014/53/EU (RED)  
2011/65/EU (RoHS)  
2014/30/EU (EMC)  
2014/35/EU (LVD)  
See DoC for details at [easee.support](http://easee.support)

### Theft Protection

Electronics can be deactivated and tracked in case of theft (contact support if your device has been stolen).  
The electronics can be permanently locked using a padlock (not visible).  
The charging cable can be locked permanently in the charging station.

---

## Installation

### Power grids and fuses

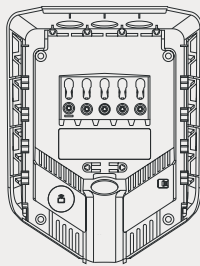
Installation network: TN, IT and TT (detected automatically)  
Installation circuit breaker: Max 80 A overload protection. The short-circuit current at the charging point (IkMax) must not exceed 10 kA. If required by the installation, class A earth fault protection can be used for the circuit.

### Integrated circuit in backplate

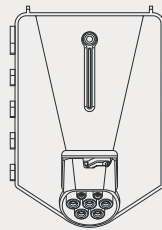
Cable cross-section: up to 16 mm<sup>2</sup> (single cable)/ up to 10 mm<sup>2</sup> (parallel connection)  
Cable diameter: 8-22 mm  
Terminal tightening: 5 Nm  
Cable strip length: 12 mm

---

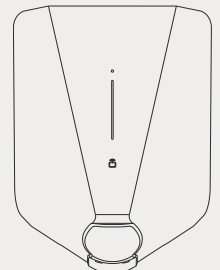
## The product contains



Backplate



Chargeberry



Cover

Distribution



**HIS Renewables GmbH**

Siemensstraße 4  
D-64760 Oberzent

Phone: +49 6068 9314 430  
Email: [sales@his-solar.com](mailto:sales@his-solar.com)

THIS DOCUMENT CONTAINS INFORMATION THAT IS  
SUBJECT TO CHANGE WITHOUT NOTICE.

The latest version of this publication can be  
downloaded at <http://easee.support>

No part of this publication may be reproduced or  
transmitted in any form or by any means, electronic  
or mechanical, including, but not limited to, copying,  
recording, retrieving data, or computer networks  
without the written permission of Easee AS.

Easee and all other Easee product names and slogans  
are trademarks or registered trademarks of Easee  
AS. Easee products can be protected by one or more  
patents.

All other products and services mentioned may be  
trademarks or service marks of their respective owners.

Illustrations of the product and user interface are  
exemplary and may differ from the actual appearance.

October 2020 - Version 1.08  
© 2018 by Easee AS. All rights reserved.



Easee AS  
Professor Olav Hanssens vei 7A,  
N-4021 Stavanger  
Org.nr: 920 292 046

Easee is distributed and maintained by a  
network of qualified partners and resellers.  
Find more information and your local  
partner at:

[www.easee-international.com](http://www.easee-international.com)